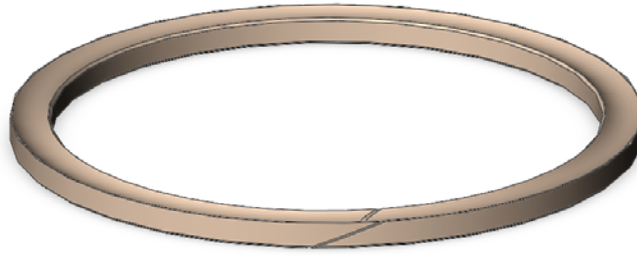


# PEEK Back-Ups

---



---

Make sure it's Victrex 450G

---

## Description

KC Seals only manufactures PEEK Back-Ups from rods and tubes that have been molded using Victrex 450G granules. That is because Victrex 450G (unfilled) and 450GL (glass-filled) PEEK materials have been thoroughly tested in conditions that meet and exceed typical exploration and production environments. Victrex 450G materials boast a continuous working temperature of 500°F (260°C) while exposed to hydrocarbons or H<sub>2</sub>S, and can maintain its mechanical properties up to 572°F (300°C) in steam. Furthermore, Victrex 450G polymers comply with Norsok M710/ISO 23936 test standards; in fact, the materials retained almost all their tensile strength during each testing phase. No other PEEK polymer has been so carefully investigated when it comes to oil and gas sealing environments, and that is precisely why the next time you order your PEEK Back-ups, make sure to ask: "is it Victrex 450G".

---

## Applications

- Prevent the extrusion of primary sealing element. Most used in conjunction with an O-Ring.

## Features

- Easy installation
- High extrusion resistance
- High temperature resistance
- Very low moisture absorption
- Excellent chemical resistance
- High tensile and modulus strength

---

## Technical Data

**Operating Pressure:** 15,000 psi for static applications. 10,000 psi for dynamic applications.

**Heat Deflection:** 600°F for Glass filled PEEK and 300°F for Unfilled PEEK.

---

## Quality Assurances

- KC Seals is ISO 9001 2015 certified and follows AQL 2.5 standard.
- Certified to Norsok M710 standard.
- Certified to ISO 23936 standard.
- All orders come with material certs stating the base polymer is Victrex 450G.
- Utilizing our Zeiss CMM, we provide detailed dimensional reports with each order.

---

## Design Parameters

KC Seals manufactures to all AS568 dash sizes, as well as any custom profiles and sizes. Profiles can come solid, scarf cut, as well as contoured solid and scarf cut.

# PEEK Back-Ups

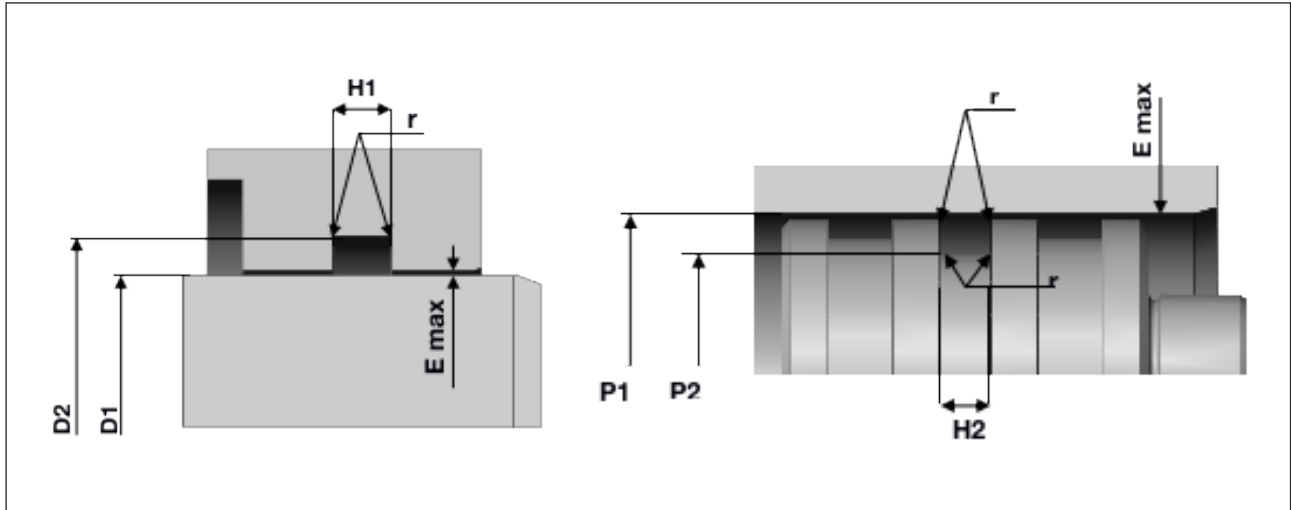
---

## Available Materials

Back-Up Materials			
Material	Description	Temperature Range	Material Code
Unfilled PEEK	Victrex 450G PEEK. Good toughness and impact performance, with high elongation properties. Certified to ISO 23936/NORSOK M-710 for high sour fluid aging.	-70°C to 260°C (-94°F to 500°F)	<b>P</b>
Glass Filled PEEK	Victrex 450GL30 PEEK. Same features as virgin PEEK, but with higher tensile strength, as well as increased shear strength. Certified to ISO 23936/NORSOK M-710 for high sour fluid aging.	-70°C to 260°C (-94°F to 500°F)	<b>GP</b>
DCMS Glass Filled PEEK	Springing opening at the gap after splitting PEEK back-ups results in rejections and failures should the product be utilized in application. Dynamic Cast Molding System™ (DCMS™) is a proprietary process that lowers inherent stress within the tube, meaning better dimensional stability and less stress. Best of all, it means no springing open at the gap.	-70°C to 260°C (-94°F to 500°F)	<b>DCMS</b>

# PEEK Back-Ups

## Hardware and Part Number Information for ROD and Piston Back-ups (INCH)



O-Ring Cross Section	AS 568 Dash Sizes	Groove dimensions					Radial clearance
		Groove Diameter		Groove width 1 back-up Single Acting	Groove width 2 back-ups Double Acting	Radius	
		Double Acting	Single Acting				
		<b>P2 -0.004</b>	<b>D1 + 0.004</b>	<b>H1 +0.010</b>	<b>H2 +0.010</b>	<b>r ±0.008</b>	<b>E max.</b>
0.070	044 to 050	P1 - 0.114	D2 + 0.114	0.142	0.197	0.010	0.002
0.103	102 to 178	P1 - 0.177	D2 + 0.177	0.177	0.233	0.010	0.002
0.139	201 to 284	P1 - 0.244	D2 + 0.244	0.220	0.276	0.010	0.003
0.210	309 to 395	P1 - 0.370	D2 + 0.370	0.311	0.378	0.010	0.003
0.249	425 to 475	P1 - 0.480	D2 + 0.480	0.421	0.520	0.010	0.004

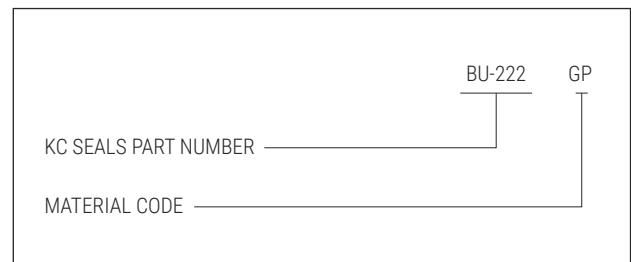
### Custom Dimensions

For dimensions that are not listed, KC Seals would either require a 2D drawing or 3D model.

We can also machine back-ups to your own metal work dimensions should they provide enough room to house profiles.

For any questions or concerns please contact us at [info@kcseals.ca](mailto:info@kcseals.ca)

### Peek Back-up Part Numbering System



# PEEK Back-Ups

KC Seals Part #	Rod Ø	Bore Ø	Groove width		Radius	Back-up Ring dimension
	D1	P2	H1 +0.010	H2 +0.010	r ±0.008	ID x OD x H
BU-044	3.740	3.898	0.142	0.197	0.010	3.768 x 3.874 x 0.045
BU-045	4.016	4.134	0.142	0.197	0.010	4.018 x 4.124 x 0.045
BU-046	4.252	4.370	0.142	0.197	0.010	4.268 x 4.374 x 0.045
BU-047	4.488	4.646	0.142	0.197	0.010	4.518 x 4.624 x 0.045
BU-048	4.764	4.882	0.142	0.197	0.010	4.768 x 4.874 x 0.045
BU-049	5.000	5.118	0.142	0.197	0.010	5.018 x 5.124 x 0.045
BU-050	5.236	5.394	0.142	0.197	0.010	5.268 x 5.374 x 0.045
BU-102	0.063	0.248	0.177	0.232	0.010	0.077 x 0.249 x 0.045
BU-103	0.098	0.276	0.177	0.232	0.010	0.109 x 0.281 x 0.045
BU-104	0.118	0.315	0.177	0.232	0.010	0.140 x 0.312 x 0.045
BU-105	0.157	0.354	0.177	0.232	0.010	0.171 x 0.343 x 0.045
BU-106	0.197	0.374	0.177	0.232	0.010	0.202 x 0.374 x 0.045
BU-107	0.217	0.394	0.177	0.232	0.010	0.234 x 0.406 x 0.045
BU-108	0.256	0.433	0.177	0.232	0.010	0.265 x 0.437 x 0.045
BU-109	0.315	0.512	0.177	0.232	0.010	0.327 x 0.499 x 0.045
BU-110	0.374	0.551	0.177	0.232	0.010	0.390 x 0.562 x 0.045
BU-111	0.433	0.630	0.177	0.232	0.010	0.452 x 0.624 x 0.045
BU-112	0.512	0.669	0.177	0.232	0.010	0.515 x 0.687 x 0.045
BU-113	0.551	0.748	0.177	0.232	0.010	0.577 x 0.749 x 0.045
BU-114	0.630	0.827	0.177	0.232	0.010	0.640 x 0.812 x 0.045
BU-115	0.669	0.866	0.177	0.232	0.010	0.702 x 0.874 x 0.045
BU-116	0.748	0.945	0.177	0.232	0.010	0.765 x 0.937 x 0.045
BU-117	0.787	0.984	0.177	0.232	0.010	0.831 x 1.003 x 0.045
BU-118	0.866	1.063	0.177	0.232	0.010	0.893 x 1.065 x 0.045
BU-119	0.945	1.142	0.177	0.232	0.010	0.956 x 1.128 x 0.045
BU-120	0.984	1.181	0.177	0.232	0.010	1.018 x 1.190 x 0.045
BU-121	1.063	1.260	0.177	0.232	0.010	1.081 x 1.253 x 0.045
BU-122	1.142	1.299	0.177	0.232	0.010	1.143 x 1.315 x 0.045
BU-123	1.181	1.378	0.177	0.232	0.010	1.206 x 1.378 x 0.045
BU-124	1.260	1.437	0.177	0.232	0.010	1.268 x 1.440 x 0.045
BU-125	1.299	1.496	0.177	0.232	0.010	1.331 x 1.503 x 0.045
BU-126	1.378	1.575	0.177	0.232	0.010	1.393 x 1.565 x 0.045
BU-127	1.437	1.614	0.177	0.232	0.010	1.456 x 1.628 x 0.045
BU-128	1.496	1.693	0.177	0.232	0.010	1.518 x 1.690 x 0.045
BU-129	1.575	1.752	0.177	0.232	0.010	1.581 x 1.753 x 0.045
BU-130	1.614	1.811	0.177	0.232	0.010	1.643 x 1.815 x 0.045
BU-131	1.693	1.890	0.177	0.232	0.010	1.706 x 1.878 x 0.045
BU-132	1.752	1.969	0.177	0.232	0.010	1.768 x 1.940 x 0.045

# PEEK Back-Ups

KC Seals Part #	Rod Ø	Bore Ø	Groove width		Radius	Back-up Ring dimension
	D1	P2	H1 +0.010	H2 +0.010	r ±0.008	ID x OD x H
BU-133	1.811	2.008	0.177	0.232	0.010	1.831 x 2.003 x 0.045
BU-134	1.890	2.047	0.177	0.232	0.010	1.893 x 2.065 x 0.045
BU-135	1.929	2.126	0.177	0.232	0.010	1.963 x 2.128 x 0.045
BU-136	2.008	2.185	0.177	0.232	0.010	2.018 x 2.190 x 0.045
BU-137	2.047	2.244	0.177	0.232	0.010	2.081 x 2.253 x 0.045
BU-138	2.126	2.283	0.177	0.232	0.010	2.143 x 2.315 x 0.045
BU-139	2.165	2.362	0.177	0.232	0.010	2.206 x 2.378 x 0.045
BU-140	2.244	2.441	0.177	0.232	0.010	2.268 x 2.440 x 0.045
BU-141	2.323	2.500	0.177	0.232	0.010	2.331 x 2.503 x 0.045
BU-142	2.362	2.559	0.177	0.232	0.010	2.393 x 2.565 x 0.045
BU-143	2.441	2.638	0.177	0.232	0.010	2.456 x 2.628 x 0.045
BU-144	2.480	2.677	0.177	0.232	0.010	2.518 x 2.690 x 0.045
BU-145	2.559	2.756	0.177	0.232	0.010	2.581 x 2.753 x 0.045
BU-146	2.638	2.795	0.177	0.232	0.010	2.643 x 2.815 x 0.045
BU-147	2.677	2.874	0.177	0.232	0.010	2.706 x 2.878 x 0.045
BU-148	2.756	2.953	0.177	0.232	0.010	2.768 x 2.940 x 0.045
BU-149	2.795	2.992	0.177	0.232	0.010	2.831 x 3.003 x 0.045
BU-150	2.874	3.071	0.177	0.232	0.010	2.893 x 3.065 x 0.045
BU-151	2.992	3.189	0.177	0.232	0.010	3.018 x 3.190 x 0.045
BU-152	3.268	3.425	0.177	0.232	0.010	3.268 x 3.440 x 0.045
BU-153	3.504	3.701	0.177	0.232	0.010	3.518 x 3.690 x 0.045
BU-154	3.740	3.937	0.177	0.232	0.010	3.768 x 3.937 x 0.045
BU-155	4.016	4.173	0.177	0.232	0.010	4.018 x 4.190 x 0.045
BU-156	4.252	4.449	0.177	0.232	0.010	4.268 x 4.440 x 0.045
BU-157	4.488	4.685	0.177	0.232	0.010	4.518 x 4.690 x 0.045
BU-158	4.764	4.921	0.177	0.232	0.010	4.768 x 4.940 x 0.045
BU-159	5.000	5.197	0.177	0.232	0.010	5.018 x 5.190 x 0.045
BU-160	5.236	5.433	0.177	0.232	0.010	5.268 x 5.440 x 0.045
BU-161	5.512	5.669	0.177	0.232	0.010	5.518 x 5.690 x 0.045
BU-162	5.748	5.945	0.177	0.232	0.010	5.768 x 5.940 x 0.045
BU-163	5.984	6.181	0.177	0.232	0.010	6.018 x 6.190 x 0.045
BU-164	6.260	6.457	0.177	0.232	0.010	6.268 x 6.440 x 0.045
BU-165	6.496	6.693	0.177	0.232	0.010	6.518 x 6.690 x 0.045
BU-166	6.772	6.929	0.177	0.232	0.010	6.768 x 6.940 x 0.045
BU-167	7.008	7.205	0.177	0.232	0.010	7.018 x 7.189 x 0.045
BU-168	7.244	7.441	0.177	0.232	0.010	7.268 x 7.440 x 0.045
BU-169	7.480	7.677	0.177	0.232	0.010	7.518 x 7.690 x 0.045
BU-170	7.756	7.953	0.177	0.232	0.010	7.768 x 7.940 x 0.045

# PEEK Back-Ups

KC Seals Part #	Rod Ø	Bore Ø	Groove width		Radius	Back-up Ring dimension
	D1	P2	H1 +0.010	H2 +0.010	r ±0.008	ID x OD x H
BU-171	7.992	8.189	0.177	0.232	0.010	8.018 x 8.190 x 0.045
BU-172	8.268	8.425	0.177	0.232	0.010	8.268 x 8.440 x 0.045
BU-173	8.504	8.701	0.177	0.232	0.010	8.518 x 8.690 x 0.045
BU-174	8.740	8.937	0.177	0.232	0.010	8.768 x 8.940 x 0.045
BU-175	9.016	9.173	0.177	0.232	0.010	9.018 x 9.190 x 0.045
BU-176	9.252	9.449	0.177	0.232	0.010	9.268 x 9.440 x 0.045
BU-177	9.488	9.685	0.177	0.232	0.010	9.518 x 9.690 x 0.045
BU-178	9.764	9.921	0.177	0.232	0.010	9.768 x 9.940 x 0.045
BU-201	0.197	0.433	0.220	0.276	0.010	0.202 x 0.438 x 0.040
BU-202	0.256	0.512	0.220	0.276	0.010	0.265 x 0.501 x 0.040
BU-203	0.315	0.551	0.220	0.276	0.010	0.327 x 0.563 x 0.040
BU-204	0.374	0.630	0.220	0.276	0.010	0.390 x 0.626 x 0.040
BU-205	0.433	0.669	0.220	0.276	0.010	0.455 x 0.691 x 0.040
BU-206	0.512	0.748	0.220	0.276	0.010	0.518 x 0.754 x 0.040
BU-207	0.551	0.827	0.220	0.276	0.010	0.580 x 0.816 x 0.040
BU-208	0.630	0.866	0.220	0.276	0.010	0.643 x 0.879 x 0.040
BU-209	0.669	0.945	0.220	0.276	0.010	0.705 x 0.941 x 0.040
BU-210	0.748	0.984	0.220	0.276	0.010	0.766 x 1.002 x 0.040
BU-211	0.787	1.063	0.220	0.276	0.010	0.828 x 1.064 x 0.040
BU-212	0.866	1.142	0.220	0.276	0.010	0.891 x 1.127 x 0.040
BU-213	0.945	1.181	0.220	0.276	0.010	0.953 x 1.189 x 0.040
BU-214	0.984	1.260	0.220	0.276	0.010	1.016 x 1.252 x 0.040
BU-215	1.063	1.299	0.220	0.276	0.010	1.078 x 1.314 x 0.040
BU-216	1.142	1.378	0.220	0.276	0.010	1.141 x 1.377 x 0.040
BU-217	1.181	1.437	0.220	0.276	0.010	1.203 x 1.439 x 0.040
BU-218	1.260	1.496	0.220	0.276	0.010	1.266 x 1.502 x 0.040
BU-219	1.299	1.575	0.220	0.276	0.010	1.334 x 1.570 x 0.040
BU-220	1.378	1.614	0.220	0.276	0.010	1.398 x 1.634 x 0.040
BU-221	1.417	1.693	0.220	0.276	0.010	1.459 x 1.695 x 0.040
BU-222	1.496	1.752	0.220	0.276	0.010	1.522 x 1.758 x 0.040
BU-223	1.614	1.890	0.220	0.276	0.010	1.647 x 1.883 x 0.040
BU-224	1.752	2.008	0.220	0.276	0.010	1.772 x 2.008 x 0.040
BU-225	1.890	2.126	0.220	0.276	0.010	1.897 x 2.133 x 0.040
BU-226	2.008	2.244	0.220	0.276	0.010	2.022 x 2.258 x 0.040
BU-227	2.126	2.362	0.220	0.276	0.010	2.147 x 2.383 x 0.040
BU-228	2.244	2.500	0.220	0.276	0.010	2.272 x 2.508 x 0.040
BU-229	2.362	2.638	0.220	0.276	0.010	2.397 x 2.712 x 0.040
BU-230	2.500	2.756	0.220	0.276	0.010	2.522 x 2.758 x 0.040

# PEEK Back-Ups

KC Seals Part #	Rod Ø	Bore Ø	Groove width		Radius	Back-up Ring dimension
	D1	P2	H1 +0.010	H2 +0.010	r ±0.008	ID x OD x H
BU-231	2.638	2.874	0.220	0.276	0.010	2.631 x 2.867 x 0.040
BU-232	2.756	2.992	0.220	0.276	0.010	2.756 x 2.992 x 0.040
BU-233	2.874	3.110	0.220	0.276	0.010	2.881 x 3.117 x 0.040
BU-234	2.992	3.268	0.220	0.276	0.010	3.006 x 3.242 x 0.040
BU-235	3.130	3.386	0.220	0.276	0.010	3.131 x 3.367 x 0.040
BU-236	3.268	3.504	0.220	0.276	0.010	3.256 x 3.492 x 0.040
BU-237	3.386	3.622	0.220	0.276	0.010	3.381 x 3.617 x 0.040
BU-238	3.543	3.740	0.220	0.276	0.010	3.506 x 3.742 x 0.040
BU-239	3.622	3.858	0.220	0.276	0.010	3.631 x 3.867 x 0.040
BU-240	3.740	4.016	0.220	0.276	0.010	3.756 x 3.992 x 0.040
BU-241	3.858	4.134	0.220	0.276	0.010	3.881 x 4.117 x 0.040
BU-242	4.016	4.252	0.220	0.276	0.010	4.006 x 4.242 x 0.040
BU-243	4.134	4.370	0.220	0.276	0.010	4.131 x 4.367 x 0.040
BU-244	4.252	4.488	0.220	0.276	0.010	4.256 x 4.492 x 0.040
BU-245	4.370	4.646	0.220	0.276	0.010	4.381 x 4.617 x 0.040
BU-246	4.488	4.764	0.220	0.276	0.010	4.506 x 4.742 x 0.040
BU-247	4.646	4.882	0.220	0.276	0.010	4.631 x 4.867 x 0.040
BU-248	4.764	5.000	0.220	0.276	0.010	4.768 x 5.004 x 0.040
BU-249	4.882	5.118	0.220	0.276	0.010	4.893 x 5.129 x 0.040
BU-250	5.000	5.236	0.220	0.276	0.010	5.018 x 5.254 x 0.040
BU-251	5.118	5.374	0.220	0.276	0.010	5.143 x 5.379 x 0.040
BU-252	5.236	5.512	0.220	0.276	0.010	5.268 x 5.504 x 0.040
BU-253	5.374	5.630	0.220	0.276	0.010	5.393 x 5.629 x 0.040
BU-254	5.512	5.748	0.220	0.276	0.010	5.518 x 5.754 x 0.040
BU-255	5.630	5.906	0.220	0.276	0.010	5.643 x 5.879 x 0.040
BU-256	5.748	5.984	0.220	0.276	0.010	5.768 x 6.004 x 0.040
BU-257	5.866	6.142	0.220	0.276	0.010	5.893 x 6.129 x 0.040
BU-258	5.984	6.260	0.220	0.276	0.010	6.018 x 6.254 x 0.040
BU-259	6.260	6.496	0.220	0.276	0.010	6.268 x 6.504 x 0.040
BU-260	6.496	6.772	0.220	0.276	0.010	6.518 x 6.754 x 0.040
BU-263	6.772	7.500	0.220	0.276	0.010	7.268 x 7.504 x 0.040
BU-261	7.008	7.008	0.220	0.276	0.010	6.768 x 7.004 x 0.040
BU-262	7.244	7.244	0.220	0.276	0.010	7.018 x 7.254 x 0.040
BU-264	7.500	7.756	0.220	0.276	0.010	7.518 x 7.754 x 0.040
BU-265	7.756	7.992	0.220	0.276	0.010	7.768 x 8.004 x 0.040
BU-266	7.992	8.268	0.220	0.276	0.010	8.018 x 8.254 x 0.040
BU-267	8.268	8.500	0.220	0.276	0.010	8.268 x 8.504 x 0.040
BU-268	8.500	8.752	0.220	0.276	0.010	8.518 x 8.754 x 0.040

# PEEK Back-Ups

KC Seals Part #	Rod Ø	Bore Ø	Groove width		Radius	Back-up Ring dimension
	D1	P2	H1 +0.010	H2 +0.010	r ±0.008	ID x OD x H
BU-269	8.752	9.016	0.220	0.276	0.010	8.768 x 9.004 x 0.040
BU-270	9.000	9.252	0.220	0.276	0.010	9.018 x 9.254 x 0.040
BU-271	9.252	9.488	0.220	0.276	0.010	9.268 x 9.504 x 0.040
BU-272	9.488	9.764	0.220	0.276	0.010	9.518 x 9.754 x 0.040
BU-273	9.764	10.000	0.220	0.276	0.010	9.768 x 10.004 x 0.040
BU-274	10.000	10.236	0.220	0.276	0.010	10.018 x 10.254 x 0.040
BU-275	10.512	10.748	0.220	0.276	0.010	10.518 x 10.754 x 0.040
BU-276	11.024	11.260	0.220	0.276	0.010	11.018 x 11.254 x 0.040
BU-277	11.496	11.772	0.220	0.276	0.010	11.518 x 11.754 x 0.040
BU-278	12.008	12.244	0.220	0.276	0.010	12.018 x 12.254 x 0.040
BU-279	12.992	13.228	0.220	0.276	0.010	13.018 x 13.254 x 0.040
BU-280	14.016	14.252	0.220	0.276	0.010	14.018 x 14.254 x 0.040
BU-281	15.000	15.236	0.220	0.276	0.010	15.018 x 15.254 x 0.040
BU-282	15.984	16.260	0.220	0.276	0.010	15.989 x 16.225 x 0.040
BU-283	17.008	17.244	0.220	0.276	0.010	16.989 x 17.225 x 0.040
BU-284	17.992	18.268	0.220	0.276	0.010	17.989 x 18.225 x 0.040
BU-309	0.433	0.827	0.311	0.378	0.010	0.450 x 0.816 x 0.060
BU-310	0.512	0.866	0.311	0.378	0.010	0.513 x 0.879 x 0.060
BU-311	0.551	0.945	0.311	0.378	0.010	0.575 x 0.941 x 0.060
BU-312	0.630	0.984	0.311	0.378	0.010	0.638 x 1.004 x 0.060
BU-313	0.669	1.063	0.311	0.378	0.010	0.700 x 1.066 x 0.060
BU-314	0.748	1.142	0.311	0.378	0.010	0.763 x 1.129 x 0.060
BU-315	0.787	1.181	0.311	0.378	0.010	0.825 x 1.191 x 0.060
BU-316	0.866	1.260	0.311	0.378	0.010	0.888 x 1.254 x 0.060
BU-317	0.945	1.299	0.311	0.378	0.010	0.950 x 1.316 x 0.060
BU-318	0.984	1.378	0.311	0.378	0.010	1.013 x 1.379 x 0.060
BU-319	1.063	1.437	0.311	0.378	0.010	1.075 x 1.441 x 0.060
BU-320	1.142	1.496	0.311	0.378	0.010	1.138 x 1.504 x 0.060
BU-321	1.181	1.575	0.311	0.378	0.010	1.198 x 1.564 x 0.060
BU-322	1.260	1.614	0.311	0.378	0.010	1.263 x 1.629 x 0.060
BU-323	1.299	1.693	0.311	0.378	0.010	1.316 x 1.682 x 0.060
BU-324	1.378	1.752	0.311	0.378	0.010	1.388 x 1.754 x 0.060
BU-325	1.496	1.890	0.311	0.378	0.010	1.513 x 1.879 x 0.060
BU-326	1.614	2.008	0.311	0.378	0.010	1.638 x 2.004 x 0.060
BU-327	1.752	2.126	0.311	0.378	0.010	1.763 x 2.129 x 0.060
BU-328	1.890	2.244	0.311	0.378	0.010	1.888 x 2.254 x 0.060
BU-329	2.008	2.362	0.311	0.378	0.010	2.013 x 2.379 x 0.060
BU-330	2.126	2.500	0.311	0.378	0.010	2.138 x 2.504 x 0.060



# PEEK Back-Ups

KC Seals Part #	Rod Ø	Bore Ø	Groove width		Radius	Back-up Ring dimension
	D1	P2	H1 +0.010	H2 +0.010	r ±0.008	ID x OD x H
BU-331	2.244	2.638	0.311	0.378	0.010	2.268 x 2.634 x 0.060
BU-332	2.362	2.756	0.311	0.378	0.010	2.393 x 2.759 x 0.060
BU-333	2.520	2.874	0.311	0.378	0.010	2.518 x 2.884 x 0.060
BU-334	2.638	2.992	0.311	0.378	0.010	2.643 x 3.009 x 0.060
BU-335	2.756	3.150	0.311	0.378	0.010	2.768 x 3.134 x 0.060
BU-336	2.874	3.268	0.311	0.378	0.010	2.893 x 3.259 x 0.060
BU-337	2.992	3.386	0.311	0.378	0.010	3.018 x 3.384 x 0.060
BU-338	3.150	3.504	0.311	0.378	0.010	3.143 x 3.509 x 0.060
BU-339	3.268	3.622	0.311	0.378	0.010	3.273 x 3.639 x 0.060
BU-340	3.386	3.740	0.311	0.378	0.010	3.398 x 3.764 x 0.060
BU-341	3.543	3.858	0.311	0.378	0.010	3.523 x 3.889 x 0.060
BU-342	3.622	4.016	0.311	0.378	0.010	3.648 x 4.014 x 0.060
BU-343	3.740	4.134	0.311	0.378	0.010	3.773 x 4.139 x 0.060
BU-344	3.858	4.252	0.311	0.378	0.010	3.898 x 4.264 x 0.060
BU-345	4.016	4.370	0.311	0.378	0.010	4.028 x 4.394 x 0.060
BU-346	4.134	4.488	0.311	0.378	0.010	4.153 x 4.519 x 0.060
BU-347	4.252	4.646	0.311	0.378	0.010	4.278 x 4.644 x 0.060
BU-348	4.370	4.764	0.311	0.378	0.010	4.403 x 4.769 x 0.060
BU-349	4.488	4.882	0.311	0.378	0.010	4.528 x 4.894 x 0.060
BU-351	4.528	5.118	0.311	0.378	0.010	4.778 x 5.144 x 0.060
BU-350	4.646	5.000	0.311	0.378	0.010	4.653 x 5.019 x 0.060
BU-352	4.882	5.236	0.311	0.378	0.010	4.903 x 5.269 x 0.060
BU-353	5.000	5.394	0.311	0.378	0.010	5.028 x 5.394 x 0.060
BU-354	5.118	5.512	0.311	0.378	0.010	5.153 x 5.519 x 0.060
BU-355	5.276	5.630	0.311	0.378	0.010	5.279 x 5.645 x 0.060
BU-356	5.394	5.748	0.311	0.378	0.010	5.403 x 5.769 x 0.060
BU-357	5.512	5.906	0.311	0.378	0.010	5.528 x 5.894 x 0.060
BU-358	5.630	5.984	0.311	0.378	0.010	5.653 x 6.019 x 0.060
BU-359	5.748	6.142	0.311	0.378	0.010	5.778 x 6.144 x 0.060
BU-360	5.906	6.260	0.311	0.378	0.010	5.903 x 6.269 x 0.060
BU-361	5.984	6.378	0.311	0.378	0.010	6.028 x 6.394 x 0.060
BU-362	6.260	6.614	0.311	0.378	0.010	6.278 x 6.644 x 0.060
BU-363	6.496	6.890	0.311	0.378	0.010	6.528 x 6.894 x 0.060
BU-364	6.772	7.126	0.311	0.378	0.010	6.778 x 7.144 x 0.060
BU-365	7.008	7.362	0.311	0.378	0.010	7.028 x 7.394 x 0.060
BU-366	7.244	7.638	0.311	0.378	0.010	7.278 x 7.644 x 0.060
BU-367	7.520	7.874	0.311	0.378	0.010	7.528 x 7.894 x 0.060
BU-368	7.756	8.110	0.311	0.378	0.010	7.778 x 8.144 x 0.060

# PEEK Back-Ups

KC Seals Part #	Rod Ø	Bore Ø	Groove width		Radius	Back-up Ring dimension
	D1	P2	H1 +0.010	H2 +0.010	r ±0.008	ID x OD x H
BU-369	7.992	8.386	0.311	0.378	0.010	8.028 x 8.394 x 0.060
BU-370	8.268	8.661	0.311	0.378	0.010	8.278 x 8.644 x 0.060
BU-371	8.504	8.858	0.311	0.378	0.010	8.528 x 8.894 x 0.060
BU-372	8.740	9.134	0.311	0.378	0.010	8.778 x 9.144 x 0.060
BU-373	9.016	9.370	0.311	0.378	0.010	9.028 x 9.394 x 0.060
BU-374	9.252	9.626	0.311	0.378	0.010	9.278 x 9.644 x 0.060
BU-375	9.488	9.882	0.311	0.378	0.010	9.528 x 9.894 x 0.060
BU-376	9.764	10.118	0.311	0.378	0.010	9.778 x 10.144 x 0.060
BU-377	10.000	10.394	0.311	0.378	0.010	10.028 x 10.394 x 0.060
BU-378	10.512	10.866	0.311	0.378	0.010	10.528 x 10.894 x 0.060
BU-379	11.024	11.417	0.311	0.378	0.010	11.028 x 11.394 x 0.060
BU-380	11.496	11.890	0.311	0.378	0.010	11.528 x 11.894 x 0.060
BU-381	12.008	12.402	0.311	0.378	0.010	12.028 x 12.394 x 0.060
BU-382	12.992	13.386	0.311	0.378	0.010	13.028 x 13.394 x 0.060
BU-383	14.016	14.409	0.311	0.378	0.010	14.028 x 14.394 x 0.060
BU-384	15.000	15.374	0.311	0.378	0.010	15.028 x 15.394 x 0.060
BU-385	16.024	16.378	0.311	0.378	0.010	16.008 x 16.374 x 0.060
BU-386	17.008	17.362	0.311	0.378	0.010	17.008 x 17.374 x 0.060
BU-387	17.992	18.386	0.311	0.378	0.010	18.008 x 18.374 x 0.060
BU-388	19.016	19.370	0.311	0.378	0.010	19.006 x 19.372 x 0.060
BU-389	20.000	20.394	0.311	0.378	0.010	20.006 x 20.372 x 0.060
BU-390	20.984	21.378	0.311	0.378	0.010	21.006 x 21.372 x 0.060
BU-391	22.008	22.362	0.311	0.378	0.010	22.006 x 22.372 x 0.060
BU-392	22.992	23.346	0.311	0.378	0.010	22.993 x 23.359 x 0.060
BU-393	24.016	24.370	0.311	0.378	0.010	23.993 x 24.359 x 0.060
BU-394	25.000	25.354	0.311	0.378	0.010	24.993 x 25.359 x 0.060
BU-395	25.984	26.378	0.311	0.378	0.010	25.993 x 26.359 x 0.060
BU-425	4.488	5.039	0.421	0.520	0.010	4.551 x 5.023 x 0.096
BU-426	4.646	5.157	0.421	0.520	0.010	4.676 x 5.148 x 0.096
BU-427	4.764	5.276	0.421	0.520	0.010	4.801 x 5.273 x 0.096
BU-428	4.882	5.394	0.421	0.520	0.010	4.929 x 5.401 x 0.096
BU-429	5.000	5.512	0.421	0.520	0.010	5.051 x 5.523 x 0.096
BU-430	5.118	5.630	0.421	0.520	0.010	5.176 x 5.648 x 0.096
BU-431	5.276	5.787	0.421	0.520	0.010	5.301 x 5.773 x 0.096
BU-432	5.394	5.906	0.421	0.520	0.010	5.426 x 5.898 x 0.096
BU-433	5.512	5.984	0.421	0.520	0.010	5.551 x 6.023 x 0.096
BU-434	5.630	6.142	0.421	0.520	0.010	5.676 x 6.148 x 0.096
BU-432	5.394	5.906	0.421	0.520	0.010	5.426 x 5.898 x 0.096
BU-433	5.512	5.984	0.421	0.520	0.010	5.551 x 6.023 x 0.096

# PEEK Back-Ups

KC Seals Part #	Rod Ø	Bore Ø	Groove width		Radius	Back-up Ring dimension
	D1	P2	H1 +0.010	H2 +0.010	r ±0.008	ID x OD x H
BU-437	6.024	6.496	0.421	0.520	0.010	6.051 x 6.523 x 0.096
BU-438	6.260	6.772	0.421	0.520	0.010	6.274 x 6.746 x 0.096
BU-439	6.496	7.008	0.421	0.520	0.010	6.524 x 6.996 x 0.096
BU-440	6.772	7.244	0.421	0.520	0.010	6.774 x 7.246 x 0.096
BU-441	7.008	7.500	0.421	0.520	0.010	7.024 x 7.496 x 0.096
BU-442	7.283	7.756	0.421	0.520	0.010	7.274 x 7.746 x 0.096
BU-443	7.480	7.992	0.421	0.520	0.010	7.524 x 7.996 x 0.096
BU-444	7.756	8.268	0.421	0.520	0.010	7.774 x 8.246 x 0.096
BU-445	7.992	8.504	0.421	0.520	0.010	8.024 x 8.496 x 0.096
BU-446	8.504	9.016	0.421	0.520	0.010	8.524 x 8.996 x 0.096
BU-447	9.016	9.488	0.421	0.520	0.010	9.024 x 9.496 x 0.096
BU-448	9.488	10.000	0.421	0.520	0.010	9.524 x 9.996 x 0.096
BU-449	10.000	10.512	0.421	0.520	0.010	10.024 x 10.496 x 0.096
BU-450	10.512	11.024	0.421	0.520	0.010	10.524 x 10.996 x 0.096
BU-451	11.024	11.496	0.421	0.520	0.010	11.024 x 11.496 x 0.096
BU-452	11.496	12.008	0.421	0.520	0.010	11.524 x 11.996 x 0.096
BU-453	12.008	8.583	0.421	0.520	0.010	12.024 x 12.496 x 0.096
BU-454	12.520	12.992	0.421	0.520	0.010	12.524 x 12.996 x 0.096
BU-455	12.992	13.504	0.421	0.520	0.010	13.024 x 13.496 x 0.096
BU-456	13.504	14.016	0.421	0.520	0.010	13.524 x 13.996 x 0.096
BU-457	14.016	14.488	0.421	0.520	0.010	14.024 x 14.216 x 0.096
BU-458	14.488	15.000	0.421	0.520	0.010	14.524 x 14.996 x 0.096
BU-459	15.000	15.512	0.421	0.520	0.010	15.024 x 15.493 x 0.096
BU-460	15.512	15.984	0.421	0.520	0.010	15.524 x 15.996 x 0.096
BU-461	16.024	16.496	0.421	0.520	0.010	16.004 x 16.476 x 0.096
BU-462	16.535	17.008	0.421	0.520	0.010	16.504 x 16.976 x 0.096
BU-463	17.008	17.500	0.421	0.520	0.010	17.004 x 17.476 x 0.096
BU-464	17.520	17.992	0.421	0.520	0.010	17.504 x 17.976 x 0.096
BU-465	18.031	18.504	0.421	0.520	0.010	18.004 x 18.476 x 0.096
BU-466	18.504	19.016	0.421	0.520	0.010	18.504 x 18.976 x 0.096
BU-467	19.016	19.488	0.421	0.520	0.010	19.004 x 19.476 x 0.096
BU-468	19.488	20.000	0.421	0.520	0.010	19.504 x 19.976 x 0.096
BU-469	20.000	20.512	0.421	0.520	0.010	20.004 x 20.476 x 0.096
BU-470	20.984	21.496	0.421	0.520	0.010	21.004 x 21.488 x 0.096
BU-471	22.008	22.520	0.421	0.520	0.010	22.004 x 22.476 x 0.096
BU-472	22.992	23.504	0.421	0.520	0.010	23.004 x 23.476 x 0.096
BU-473	24.016	24.488	0.421	0.520	0.010	24.004 x 24.476 x 0.096
BU-474	25.000	25.512	0.421	0.520	0.010	25.004 x 25.476 x 0.096
BU-475	25.984	26.496	0.421	0.520	0.010	26.004 x 26.476 x 0.096